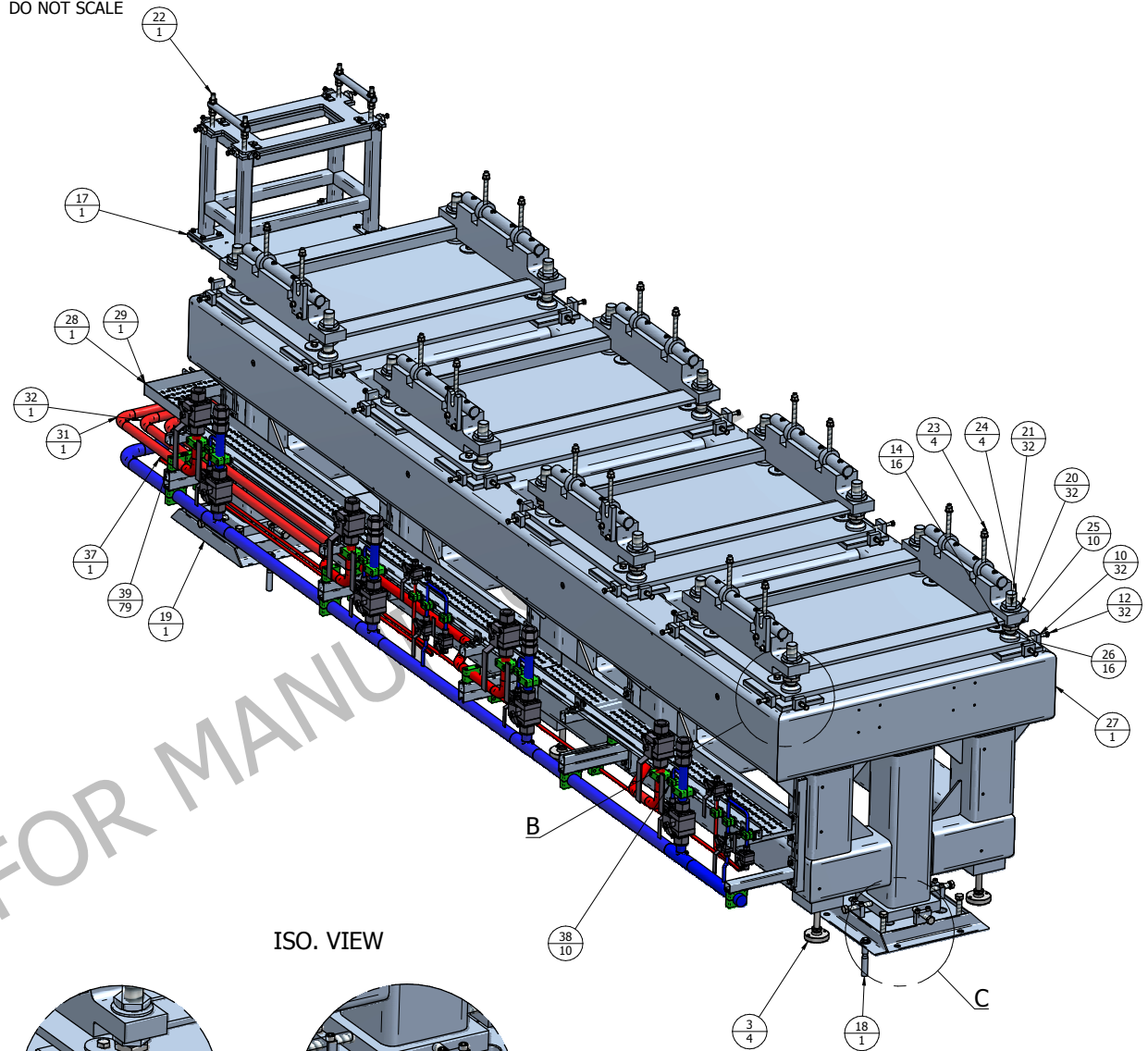
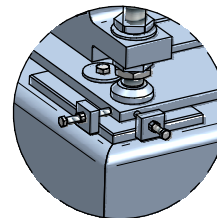


DO NOT SCALE

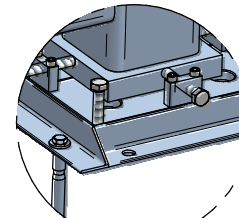
ITEM No	Document Number	TITLE / DESCRIPTION	QTY	Material	DRG CAT No	Supplier
1	SP-006244	VERTICAL MOUNT 500mm	7	STEEL	P1000	UNISTRUT
2	SP-005826	3M STOCK CHANNEL	1	STEEL	P1000	UNISTRUT
3	SP-006228	LEVelling FOOT, M24	4	STEEL	3471.W898	WIXROYD
4	SP-005829	CHANNEL RAIL ADAPTOR	21	STAIN.STEEL	CRA5/1DMWS	STAUFF
5*	SP-000408	PLAIN WASHER	40	Steel	M10	
6*	SP-000874	FULL HEX NUT	16	Stainless steel	M10	
7*	SP-001383	M10X30 HEX HD SCREW	8	STAIN.STEEL	M10 x 30 LG	
8*	SP-000890	HEX HD BOLT	16	STAIN.STEEL	M10 x 45 LG	
9	SP-002833	SINGLE COIL SPRING WASHER	47	STAIN.STEEL	M12	
10	SP-000875	FULL HEX NUT	32	Stainless steel	M12	
11	SP-000857	PLAIN WASHER	51	Stainless steel	M12	
12	SP-001183	HEX HD SCREW	32	STEEL	M12 x 100 LG	
13	SP-001594	M12 X 35LG HEX HD SCREW	36	STEEL	M12 x 35 LG	
14	SP-001209	HEX HD SCREW	16	STEEL	M16 x 40 LG	
15*	SP-005849	12" DOUBLE BRACKET	5	STEEL	P2544	UNISTRUT
16	SP-005848	12" BRACKET	8	STEEL	P2944	UNISTRUT
17	SI-6292-678	BEAM MONITOR ANGLE SUPPORT	1		SI-6292-678	
18	SI-6292-679	BASEPLATE ASSY	1		SI-6292-679	
19	SI-6292-683	DOUBLE BASEPLATE ASSY	1		SI-6292-683	
20	SI-6292-686	ADJUSTMENT WASHER	32	STAIN.S	SI-6292-686	
21	SI-6292-687	ADJUSTMENT DOME	32	STAIN.S	SI-6292-687	
22	SI-6292-644	MONITOR FRAME ASSEMBLY	1		SI-6290-654	
23	SI-6290-658	Q13 TYPE RAIL ASSY	4		SI-6290-658	
24	SI-6290-664	Q13 JACKING PLATE	4		SI-6290-664	
25	SI-6290-670	NUT THIN M42 x 2-6H (FINE THD)	10	SEE NOTE 1	SI-6290-670	
26	SI-6290-671	LARGE WASHER - M16	16	SEE NOTE 1	SI-6290-671	
27	SI-6292-612	FRAME WELDMENT	1		SI-6292-612	
28	SI-6292-689	MITRED CABLE TRAY 150x3000 LG	1	GALVANIZED STEEL	SI-6292-689	RS COMPONENTS
29	SI-6292-690	MITRED CABLE TRAY 150x1200 LG	1	GALVANIZED STEEL	SI-6292-690	RS COMPONENTS
30	SI-6292-688	150 WIDE CABLE TRAY 1790mm	1	GALVANIZED STEEL	SI-6292-688	RS COMPONENTS
31	SI-6292-614	E1Q46A 1.5" RETURN PIPE	1		SI-6292-614	
32	SI-6292-615	E1Q46 RETURN PIPE	1		SI-6292-615	
33	SI-6292-616	E1Q45 RETURN WATER PIPE	1		SI-6292-616	
34	SI-6292-617	E1Q44 RETURN WATER PIPE	1		SI-6292-617	
35	SI-6292-618	E1Q44-46A WATER FEED	1		SI-6292-618	
36	SI-6292-619	E1Q44 INSERT RETURN PIPE	1		SI-6292-619	
37	SI-6292-620	E1Q46 INSERT RETURN PIPE	1		SI-6292-620	
38	SP-005861	0.5" PIPE CLAMP	10	POLYPROPYLENE, GENERAL PURPOSE	3012,7PPH	STAUFF
39	SP-005881	M12 UNISTRUT NUT WITH SPRING	79	STAIN.STEEL	P1010M12	UNISTRUT
40*	SP-000871	PLAIN WASHER	79	Stainless steel	M6	
41*	SP-001936	SOCKET HD CAP SCREW	25	STEEL	M6 x 25 LG	
42	SP-005885	90° ANGLE BRACKET	5	STEEL	P1281	UNISTRUT
43*	SP-005508	1.5" pipe clamp	22	POLYPROPYLENE, GENERAL PURPOSE	538/38PPH	STAUFF
44*	SP-001941	SOCKET HD CAP SCREW	44	STEEL	M6 x 50 LG	
45	SP-005509	2" pipe clamp	5	POLYPROPYLENE, GENERAL PURPOSE	6050,8 PPH	STAUFF
46*	SP-001943	SOCKET HD CAP SCREW	10	Stainless steel	M6 x 60 LG	
47*	SP-005532	1/2" TWIN PIPE CLAMP	5	POLYPROPYLENE, GENERAL PURPOSE	212,7/12,7PPH	STAUFF
48	SP-006296	SOCKET HD CAP SCREW M12 x 40 LG	21	STEEL	M12 x 180 LG	



ISO. VIEW



DETAIL B

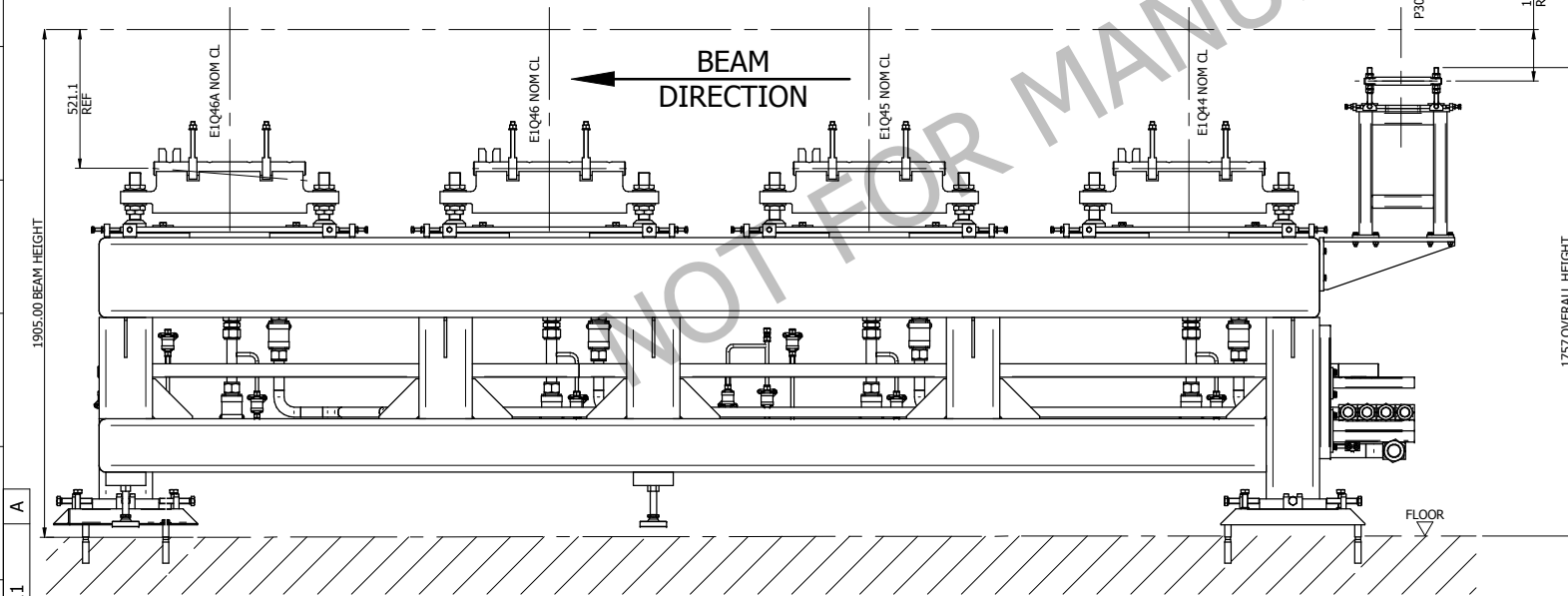
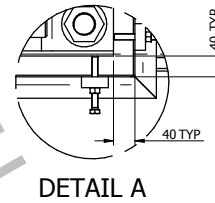
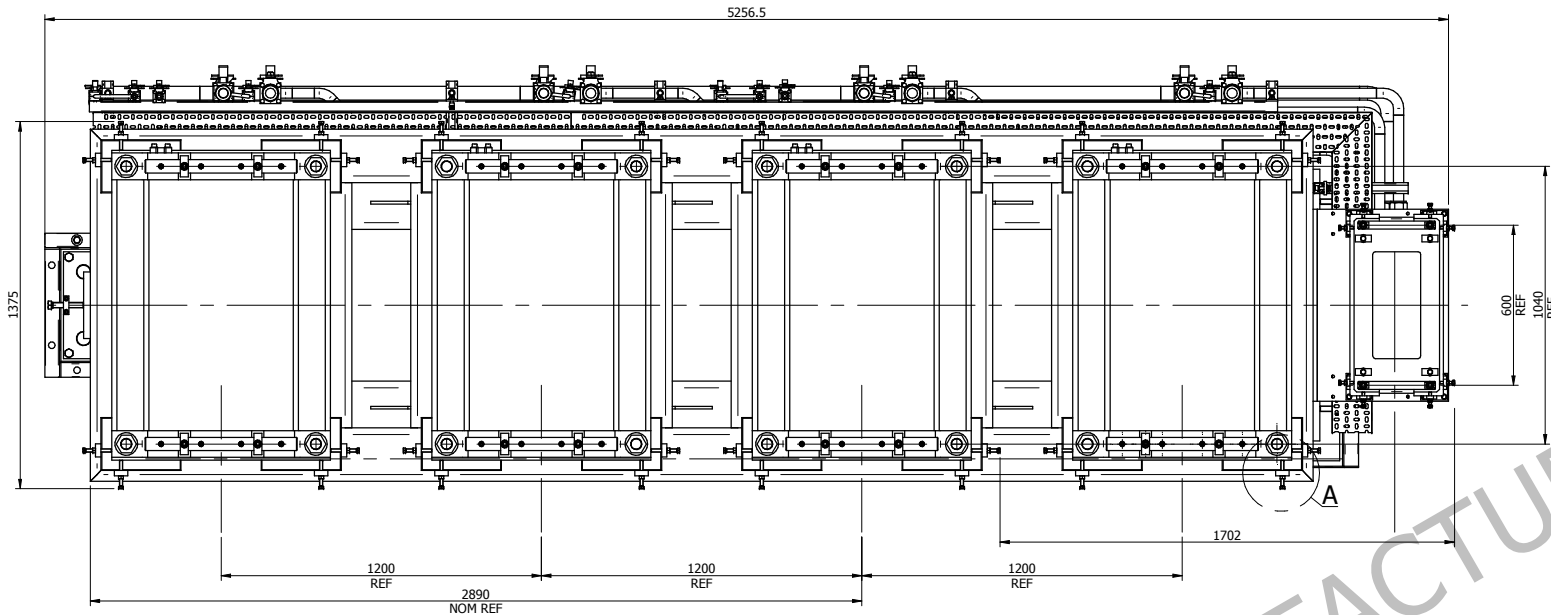


DETAIL C

NOTES

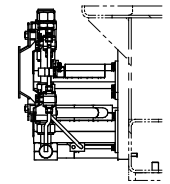
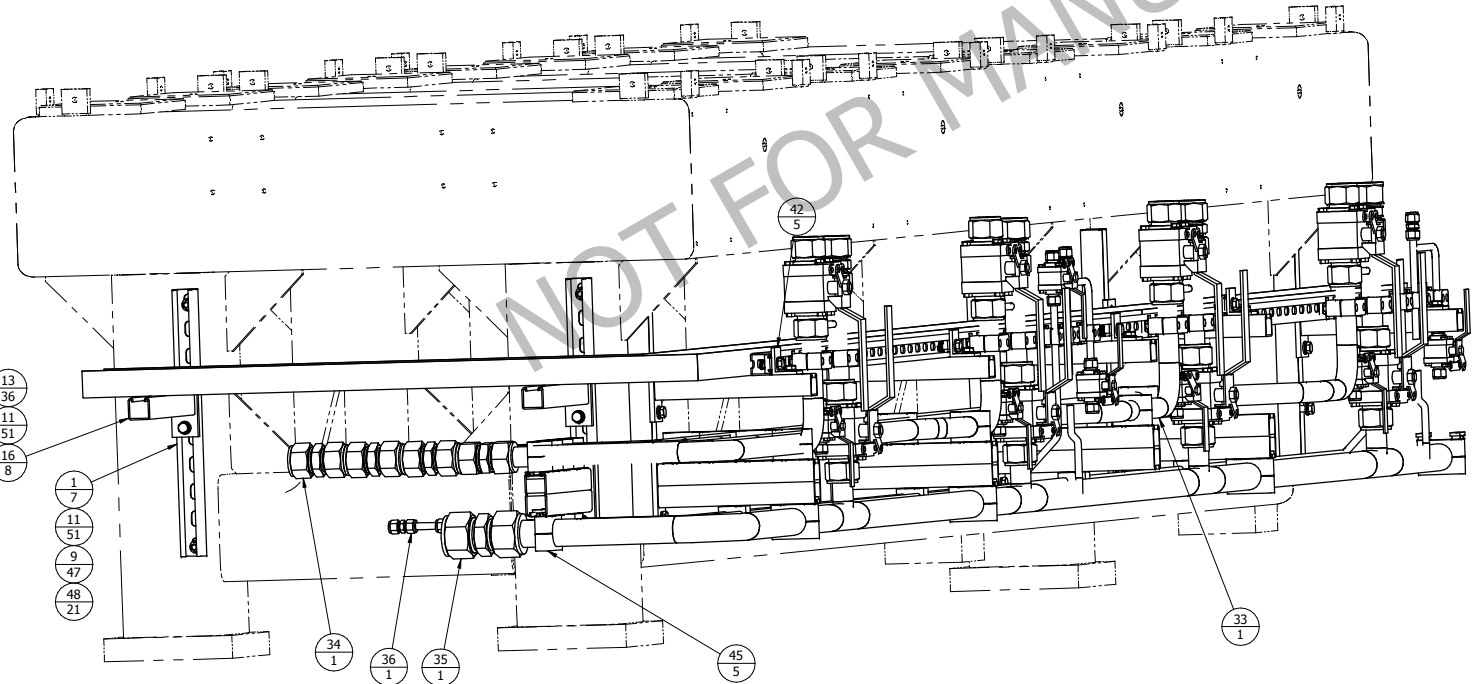
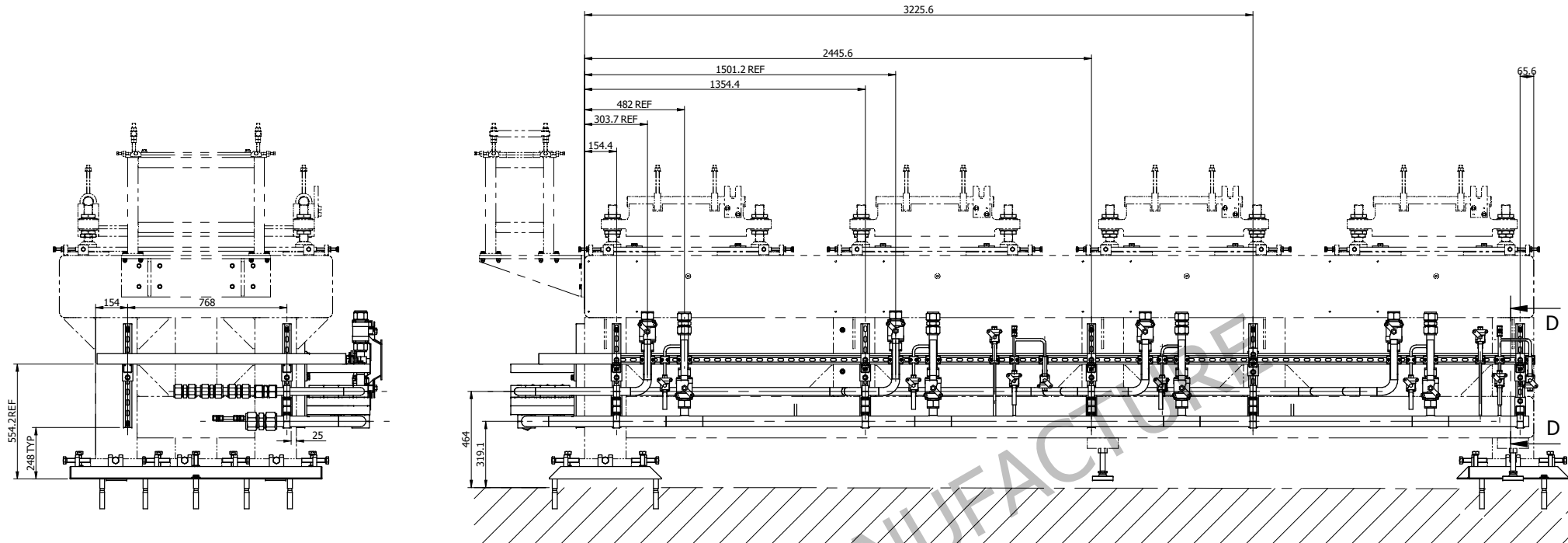
- BEARING SURFACES (AS SHOWN IN DETAILS B & C) TO HAVE CASTROL NUCLEOL G121 GREASE APPLIED TO ENABLE SMOOTH ADJUSTMENT.
- APPROXIMATE MASS: 4200 kg

A	26.11.2013	RDR				MANUFACTURE ONLY WHEN STATUS IS ISSUED	IN WORK
ISSUE	DATE	MOD. No.	DRAWN BY	CHKD BY	APPD BY	TOLERANCES UNLESS STATED	SURFACE TEXTURE UNLESS STATED
						X ± 0.5 XX ± 0.2 XXX ± 0.1	ANGLE ± 0.2°
						MATERIAL & SPEC.	FINISH
						SEE ITEMS LIST	CLEAN REMOVE ALL BURRS
DIMENSIONS IN mm UNLESS STATED ISIS DESIGN DIVISION   USED ON SI-6292-604 RUTHERFORD APPLETON LABORATORY, HARWELL OXFORD, DIDCOT, OXFORDSHIRE, OX11 0QX TITLE							
<b>E1Q44-E1Q46 FRAME ASSY</b>							
TS-1 EPB MAGNETS						DOWNSTREAM EPB1	
A1 SI-6292-611						SHEET 1 OF 3 A	



SCALE 1:10

A	26.11.2013	RDR				MANUFACTURE ONLY WHEN STATUS IS ISSUED	<b>IN WORK</b>
ISSUE	DATE	MOD. No.	DRAWN BY	CHKD BY	APPD BY	TOLERANCES UNLESS STATED	STATUS
						X ± 0.5 XX ± 0.3 XXX ± 0.1	SURFACE TEXTURE UNLESS STATED Ra N/A
						ANGLE XXX ± 0.2°	FINISH CLEAN REMOVE ALL BURRS
		DRAWING CONFORMS TO BS 8888 TOLERANCING ISO 8015		MATERIAL & SPEC. SEE ITEMS LIST		DIMENSIONS IN mm UNLESS STATED	
		ISIS DESIGN DIVISION		USED ON SI-6292-604		RUTHERFORD APPLETON LABORATORY, HARWELL OXFORD, DIDCOT, OXFORDSHIRE, OX11 0QX	
TITLE		<b>E1Q44-E1Q46 FRAME ASSY</b>		TS-1 EPB MAGNETS		DOWNSTREAM EPB1	
A1 SI-6292-611		SHEET		2 OF 3		A	



PART SECTION D-D

A	26.11.2013	RDR				MANUFACTURE ONLY WHEN STATUS IS ISSUED	IN WORK
ISSUE	DATE	MOD. No.	DRAWN BY	CHKD BY	APPD BY	TOLERANCES UNLESS STATED	STATUS
					X ± 0.5 XX ± 0.2 XXX ± 0.1		ANGLE ± 0.2°
DRAWING CONFORMS TO BS 8888 TOLERANCING ISO 8015			MATERIAL & SPEC. SEE ITEMS LIST		FINISH CLEAN REMOVE ALL BURRS		
DIMENSIONS IN mm UNLESS STATED			USED ON SI-6292-604		SURFACE TEXTURE UNLESS STATED Ra N/A		
ISIS DESIGN DIVISION RUTHERFORD APPLETON LABORATORY, HARWELL OXFORD, DIDCOT, OXFORDSHIRE, OX11 0QX							
TITLE E1Q44-E1Q46A FRAME ASSY							
TS-1 EPB MAGNETS						DOWNSTREAM EPB1	
A1 SI-6292-611						SHEET 3 OF 3	